



**COMMONWEALTH OF KENTUCKY  
TRANSPORTATION CABINET**  
Frankfort, Kentucky 40622  
[www.transportation.ky.gov/](http://www.transportation.ky.gov/)

**Matthew G. Bevin**  
Governor

**Greg Thomas**  
Secretary

April 22, 2016

CALL NO. 108  
CONTRACT ID NO. 161213  
ADDENDUM # 2

Subject: Simpson County, STP 5071 (018)  
Letting April 29, 2016

- (1) Revised - Plan Sheet - R2C & R62
- (2) Revised - Bid Items - Pages 156-159 of 159

Proposal revisions are available at <http://transportation.ky.gov/Construction-Procurement/>.

If you have any questions, please contact us at 502-564-3500.

Sincerely,

A handwritten signature in cursive script that reads "Rachel Mills".

Rachel Mills, P.E.  
Director  
Division of Construction Procurement

RM:ks  
Enclosures



An Equal Opportunity Employer M/F/D

## GENERAL SUMMARY

ITEM	DESCRIPTION	UNIT	
0078	CRUSHED AGGREGATE SIZE NO. 2	TON	2,544
1825	ISLAND CURB AND GUTTER	LF	200
1982	DELINEATOR FOR GUARDRAIL-WHITE	EACH	21
1984	DELINEATOR FOR BARRIER-WHITE	EACH	2
2014	BARRICADE-TYPE III	EACH	16
2203	STRUCTURAL EXCAVATION-UNCLASSIFIED	CU YD	36
2223	GRANULAR EMBANKMENT	CU YD	116
2242	WATER	MGAL	100
2263	FENCE - WOVEN WIRE - TYPE 2	LF	630
2351	GUARDRAIL-STEEL W BEAM-S FACE	LF	1,930
2360	GUARDRAIL TERMINAL SECTION NO 1	EACH	5
2363	GUARDRAIL CONNECTOR TO BRIDGE END TY A	EACH	8
2391	GUARDRAIL END TREATMENT TYPE 4A	EACH	1
2429	RIGHT-OF-WAY MONUMENT TYPE 1	EACH	71
2432	WITNESS POST	EACH	36
2469	CLEAN SINKHOLE	EACH	2
2483	CHANNEL LINING CLASS II	TON	1,529
2545	CLEARING & GRUBBING	LP SUM	1
2555	CONCRETE-CLASS B	CU YD	19
2562	SIGNS (FOR CONSTRUCTION)	SQ FT	280
2568	MOBILIZATION	LP SUM	1
2569	DEMOBILIZATION	LP SUM	1
2585	EDGE KEY	LF	390
2599	FABRIC-GEOTEXTILE TYPE IV	SQ YD	5,652
2600	FABRIC GEOTEXTILE TY IV FOR PIPE	SQ YD	2,800
2650	MAINTAIN AND CONTROL TRAFFIC	LP SUM	1
2651	DIVERSIONS (BY-PASS DETOURS) (DIVERSION #1 STA. 10+00 TO STA. 23+21)	LP SUM	1
2651	DIVERSIONS (BY-PASS DETOURS) (DIVERSION #2 STA. 20+00 TO STA. 63+22)	LP SUM	1
2651	DIVERSIONS (BY-PASS DETOURS) (DIVERSION #3 STA. 30+00 TO STA. 67+06)	LP SUM	1
2671	PORTABLE CHANGEABLE MESSAGE SIGN	EACH	2
2701	TEMP SILT FENCE	LF	10,597
2704	SILT TRAP TYPE B	EACH	174
2707	CLEAN SILT TRAP TYPE B	EACH	174
2726	STAKING	LP SUM	1
5950	EROSION CONTROL BLANKET	SQ YD	45,848
5952	TEMP MULCH	SQ YD	100,880
5953	TEMP SEEDING & PROTECTION	SQ YD	136,527
23274ENIF	TURF REINFORCEMENT MAT 1	SQ YD	23,372
5963	INITIAL FERTILIZER	TON	5
5964	20-10-10 FERTILIZER	TON	8
5985	SEEDING & PROTECTION	SQ YD	150,565
5990	SODDING	SQ YD	21,600
5992	AGRICULTURAL LIMESTONE	TON	94
6406	SBM ALUM SHEET SIGNS .080 IN	SQ FT	376
6410	STEEL POST TYPE 1	LF	648
2463IEC	BARCODE SIGN INVENTORY	EACH	89
6510	PAVE STRIPING-TEMP PAINT-4 IN	LF	48,196
6514	PAVE STRIPING-PERM PAINT-4 IN	LF	61,914
6568	PAVE MARKING - THERMO STOP BAR - 24 IN	LF	62
20362ES403	SHOULDER RUMBLE STRIPS - SAWED	LF	30,333
20458ES403	CENTERLINE RUMBLE STRIPS	LF	15,008
24779EC	INTELLIGENT COMPACTION FOR SOIL	CU YD	174,579
24780EC	INTELLIGENT COMPACTION FOR AGGREGATE	TON	45,213
24781EC	INTELLIGENT COMPACTION FOR ASPHALT	TON	40,560
20315ED	CLAY SOIL CAP	CU YD	15
10203ND	PAVEMENT ADJUSTMENT (ASPHALT)	LS	1
10203ND	PAVEMENT ADJUSTMENT (CONCRETE)	LS	1
20000ES724	TREE	EACH	11

**NOTES:**

- ① CLEARING AND GRUBBING ~ 53.12 AC
- ② 100 CY FOR TREATMENT OF OPEN SINKHOLES (AT DIRECTION OF ENGINEER)
- ③ ALL NON-PAVED AREAS INSIDE THE DISTURB LIMITS STEEPER THAN A 4:1 SLOPE SHALL BE TREATED WITH SEEDING/ EROSION CONTROL BLANKET WHEN FINISH GRADE HAS BEEN ACHIEVED. 35,848 SQ. YD. HAS BEEN INCLUDED FOR DITCHES AND 10,000 SQ. YD. FOR 2:1 SLOPES AND AS DIRECTED BY THE ENGINEER.
- ④ TO BE USED IN AREAS WHERE SUBGRADE MOISTURE PROBLEMS ARE ENCOUNTERED OR WHERE FUTURE EMBANKMENT SATURATION MAY OCCUR ~ NO. 2 USED FOR ESTIMATION PURPOSES (SEE GEOTECHNICAL NOTES FOR MORE DETAIL) ~ ESTIMATED 1,428 TONS FOR WET SUBGRADE UNDER SHALLOW FILL OR CUT OR UNDER WET PAVEMENT, 766 TONS FOR WET SUBGRADE UNDER EMBANKMENT CONSTRUCTION, AND 250 TONS FOR CONSTRUCTING THE BASE OF FILL NEAR STATION 98+00 UP TO ELEVATION 599.
- ⑤ TO BE USED IN AREAS WHERE SUBGRADE MOISTURE PROBLEMS ARE ENCOUNTERED, WHERE FUTURE EMBANKMENT SATURATION MAY OCCUR, AND IN SINKHOLE CAPPING (SEE GEOTECHNICAL NOTES FOR MORE DETAIL) ~ ESTIMATED 4,178 SQ YDS FOR WET SUBGRADE UNDER SHALLOW FILL OR CUT OR UNDER WET PAVEMENT, 1,156 SQ YDS FOR WET SUBGRADE UNDER EMBANKMENT CONSTRUCTION, 200 SQ YDS FOR CONSTRUCTING THE BASE OF FILL NEAR STATION 98+00 UP TO ELEVATION 599, AND 118 SQ YDS FOR SINKHOLE CAPPING.
- ⑨ FOR CONTROLLING DUST CAUSED BY MAINTAINING TRAFFIC
- ⑩ INCLUDES 69 SQ FT FOR TWO STANDARD DRAWING NO. TTC-110 CONFIGURATIONS AND 211 SQ FT FOR DETOUR SIGNS
- ⑪ INCLUDES 100 TONS OF NO. 2 STONE FOR POSSIBLE ROADWAY FAILURES OR OTHER MISCELLANEOUS USES.
- ⑫ TO BE USED FOR MAINLINE, APPROACH AND DIVERSION PAVEMENT TIE-DOWNS.
- ⑬ TO BE PLACED AND PROGRAMMED AS DIRECTED BY ENGINEER
- ⑭ SEE PROPOSAL FOR SPECIAL NOTE FOR ALTERNATE PAVMENT BID ADJUSTMENT
- ⑮ SEE SHEET R2D FOR EARTHWORK DUE TO ALTERNATE PAVEMENT BID
- ⑯ SEE PROPOSAL FOR SPECIAL NOTE BARCODE LABEL ON PERMANENT SIGNS
- ⑰ 6-SUGAR MAPLE TREES (2"-3" CALIPER), 4-AMUR MAPLE TREES (2" CALIPER) & 1-WEeping WILLOW TREE (2"-3" CALIPER), SEE SHEETS R5 & R9 FOR LOCATIONS.
- ⑱ SEE SHEET R5 FOR LOCATIONS.
- ⑲ TO BE USED WITH GRAVITY RETAINING WALL ML STA. 611+49.99-STA. 612+29.88 SEE PLAN SHEETS R17 & R62

FILE NAME: G:\PWORK\STEWART.LICH\0634316\RO020CSUJ.DGN  
 USER: stewart.lch  
 DATE PLOTTED: April 21, 2016  
 E-SHEET NAME:  
 MicroStation v8.11.7.443

### GENERAL SUMMARY

REVISED: 4/21/2016

ITEM	DESCRIPTION	UNIT	
0078	CRUSHED AGGREGATE SIZE NO. 2	TON	2,544
1825	ISLAND CURB AND GUTTER	LF	200
1982	DELINEATOR FOR GUARDRAIL-WHITE	EACH	21
1984	DELINEATOR FOR BARRIER-WHITE	EACH	2
2014	BARRICADE-TYPE III	EACH	16
2203	STRUCTURAL EXCAVATION-UNCLASSIFIED	CU YD	36
2223	GRANULAR EMBANKMENT	CU YD	116
2242	WATER	MGAL	100
2263	FENCE - WOVEN WIRE - TYPE 2	LF	630
2351	GUARDRAIL-STEEL W BEAM-S FACE	LF	1,930
2360	GUARDRAIL TERMINAL SECTION NO 1	EACH	5
2363	GUARDRAIL CONNECTOR TO BRIDGE END TY A	EACH	8
2391	GUARDRAIL END TREATMENT TYPE 4A	EACH	1
2429	RIGHT-OF-WAY MONUMENT TYPE 1	EACH	71
2432	WITNESS POST	EACH	36
2469	CLEAN SINKHOLE	EACH	2
2483	CHANNEL LINING CLASS II	TON	1,529
2545	CLEARING & GRUBBING	LP SUM	1
2555	CONCRETE-CLASS B	CU YD	19
2562	SIGNS (FOR CONSTRUCTION)	SO FT	280
2568	MOBILIZATION	LP SUM	1
2569	DEMOBILIZATION	LP SUM	1
2585	EDGE KEY	LF	390
2599	FABRIC-GEOTEXTILE TYPE IV	SO YD	5,652
2600	FABRIC GEOTEXTILE TY IV FOR PIPE	SO YD	2,800
2650	MAINTAIN AND CONTROL TRAFFIC	LP SUM	1
2651	DIVERSIONS (BY-PASS DETOURS) (DIVERSION #1 STA. 10+00 TO STA. 23+21)	LP SUM	1
2651	DIVERSIONS (BY-PASS DETOURS) (DIVERSION #2 STA. 20+00 TO STA. 63+22)	LP SUM	1
2651	DIVERSIONS (BY-PASS DETOURS) (DIVERSION #3 STA. 30+00 TO STA. 67+06)	LP SUM	1
2671	PORTABLE CHANGEABLE MESSAGE SIGN	EACH	2
2701	TEMP SILT FENCE	LF	10,597
2704	SILT TRAP TYPE B	EACH	174
2707	CLEAN SILT TRAP TYPE B	EACH	174
2726	STAKING	LP SUM	1
5950	EROSION CONTROL BLANKET	SO YD	45,848
5952	TEMP MULCH	SO YD	100,880
5953	TEMP SEEDING & PROTECTION	SO YD	136,527
23274ENIF	TURF REINFORCEMENT MAT 1	SO YD	23,372
5963	INITIAL FERTILIZER	TON	5
5964	20-10-10 FERTILIZER	TON	8
5985	SEEDING & PROTECTION	SO YD	150,565
5990	SODDING	SO YD	21,600
5992	AGRICULTURAL LIMESTONE	TON	94
6406	SBM ALUM SHEET SIGNS .080 IN	SO FT	376
6410	STEEL POST TYPE 1	LF	648
2463IEC	BARCODE SIGN INVENTORY	EACH	89
6510	PAVE STRIPING-TEMP PAINT-4 IN	LF	48,196
6514	PAVE STRIPING-PERM PAINT-4 IN	LF	61,914
6568	PAVE MARKING - THERMO STOP BAR - 24 IN	LF	62
20362ES403	SHOULDER RUMBLE STRIPS - SAWED	LF	30,333
20458ES403	CENTERLINE RUMBLE STRIPS	LF	15,008
24779EC	INTELLIGENT COMPACTION FOR SOIL	CU YD	174,579
24780EC	INTELLIGENT COMPACTION FOR AGGREGATE	TON	45,213
24781EC	INTELLIGENT COMPACTION FOR ASPHALT	TON	40,560
20315ED	CLAY SOIL CAP	CU YD	15
10203ND	PAVEMENT ADJUSTMENT (ASPHALT)	LS	1
10203ND	PAVEMENT ADJUSTMENT (CONCRETE)	LS	1
20000ES724	TREE	EACH	11

**NOTES:**

- ① CLEARING AND GRUBBING ~ 53.12 AC
- ② 100 CY FOR TREATMENT OF OPEN SINKHOLES (AT DIRECTION OF ENGINEER)
- ③ ALL NON-PAVED AREAS INSIDE THE DISTURB LIMITS STEEPER THAN A 4:1 SLOPE SHALL BE TREATED WITH SEEDING/ EROSION CONTROL BLANKET WHEN FINISH GRADE HAS BEEN ACHIEVED. 35,848 SQ. YD. HAS BEEN INCLUDED FOR DITCHES AND 10,000 SQ. YD. FOR 2:1 SLOPES AND AS DIRECTED BY THE ENGINEER.
- ④ TO BE USED IN AREAS WHERE SUBGRADE MOISTURE PROBLEMS ARE ENCOUNTERED OR WHERE FUTURE EMBANKMENT SATURATION MAY OCCUR ~ NO. 2 USED FOR ESTIMATION PURPOSES (SEE GEOTECHNICAL NOTES FOR MORE DETAIL) ~ ESTIMATED 1,428 TONS FOR WET SUBGRADE UNDER SHALLOW FILL OR CUT OR UNDER WET PAVEMENT, 766 TONS FOR WET SUBGRADE UNDER EMBANKMENT CONSTRUCTION, AND 250 TONS FOR CONSTRUCTING THE BASE OF FILL NEAR STATION 98+00 UP TO ELEVATION 599.
- ⑤ TO BE USED IN AREAS WHERE SUBGRADE MOISTURE PROBLEMS ARE ENCOUNTERED, WHERE FUTURE EMBANKMENT SATURATION MAY OCCUR, AND IN SINKHOLE CAPPING (SEE GEOTECHNICAL NOTES FOR MORE DETAIL) ~ ESTIMATED 4,178 SQ YDS FOR WET SUBGRADE UNDER SHALLOW FILL OR CUT OR UNDER WET PAVEMENT, 1,156 SQ YDS FOR WET SUBGRADE UNDER EMBANKMENT CONSTRUCTION, 200 SQ YDS FOR CONSTRUCTING THE BASE OF FILL NEAR STATION 98+00 UP TO ELEVATION 599, AND 118 SQ YDS FOR SINKHOLE CAPPING.
- ⑨ FOR CONTROLLING DUST CAUSED BY MAINTAINING TRAFFIC
- ⑩ INCLUDES 69 SO FT FOR TWO STANDARD DRAWING NO. TTC-110 CONFIGURATIONS AND 211 SO FT FOR DETOUR SIGNS
- ⑪ INCLUDES 100 TONS OF NO. 2 STONE FOR POSSIBLE ROADWAY FAILURES OR OTHER MISCELLANEOUS USES.
- ⑫ TO BE USED FOR MAINLINE, APPROACH AND DIVERSION PAVEMENT TIE-DOWNS.
- ⑬ TO BE PLACED AND PROGRAMMED AS DIRECTED BY ENGINEER
- ⑭ SEE PROPOSAL FOR SPECIAL NOTE FOR ALTERNATE PAVMENT BID ADJUSTMENT
- ⑮ SEE SHEET R2D FOR EARTHWORK DUE TO ALTERNATE PAVEMENT BID
- ⑯ SEE PROPOSAL FOR SPECIAL NOTE BARCODE LABEL ON PERMANENT SIGNS
- ⑰ 6-SUGAR MAPLE TREES (2"-3" CALIPER), 4-AMUR MAPLE TREES (2" CALIPER) & 1-WEeping WILLOW TREE (2"-3" CALIPER), SEE SHEETS R5 & R9 FOR LOCATIONS.
- ⑱ SEE SHEET R5 FOR LOCATIONS.
- ⑲ TO BE USED WITH GRAVITY RETAINING WALL ML STA. 611+49.99-STA. 612+29.88 SEE PLAN SHEETS R17 & R62

FILE NAME: G:\PWORK\STEWART.LICH\0634316\RO020205.DGN

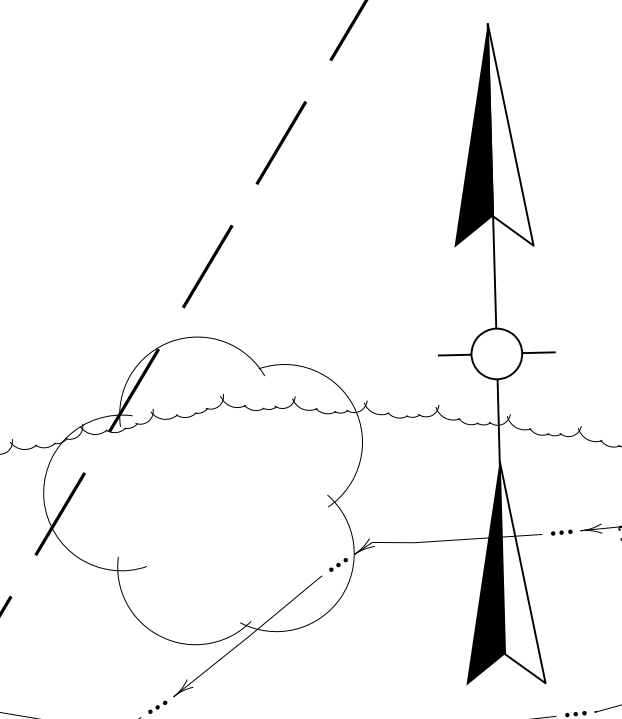
USER: stewart.lch  
DATE PLOTTED: April 21, 2016

E-SHEET NAME:

MicroStation v8.11.7.443

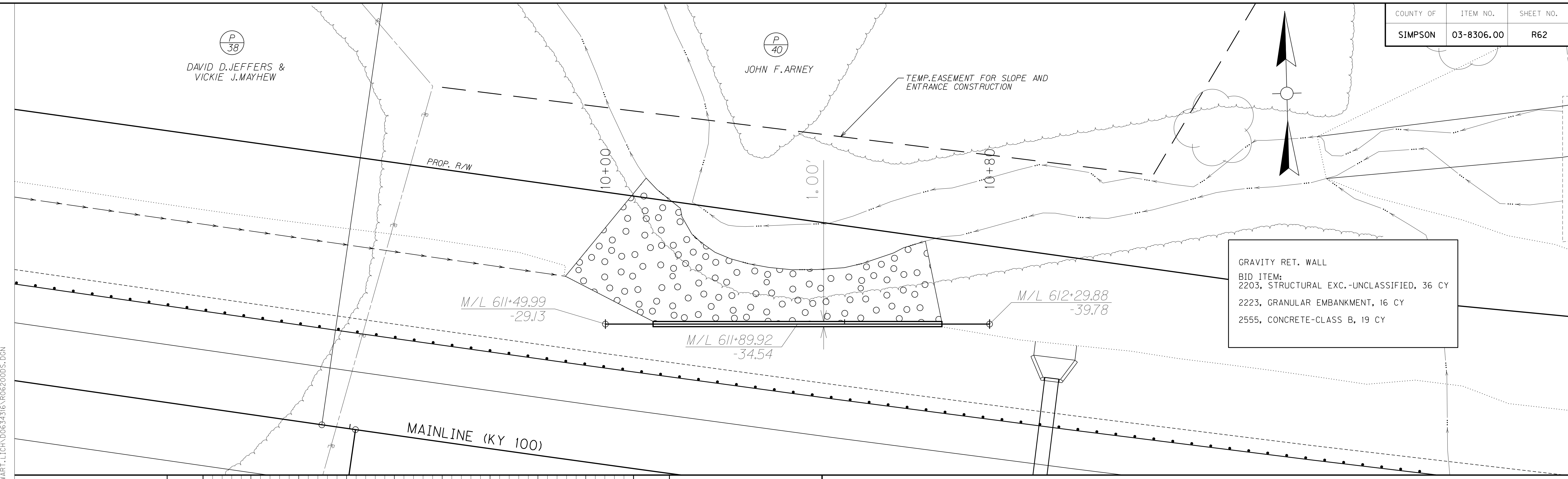
P  
38  
DAVID D. JEFFERS &  
VICKIE J. MAYHEW

P  
40  
JOHN F. ARNEY



TEMP. EASEMENT FOR SLOPE AND  
ENTRANCE CONSTRUCTION

GRAVITY RET. WALL  
 BID ITEM:  
 2203, STRUCTURAL EXC.-UNCLASSIFIED, 36 CY  
 2223, GRANULAR EMBANKMENT, 16 CY  
 2555, CONCRETE-CLASS B, 19 CY

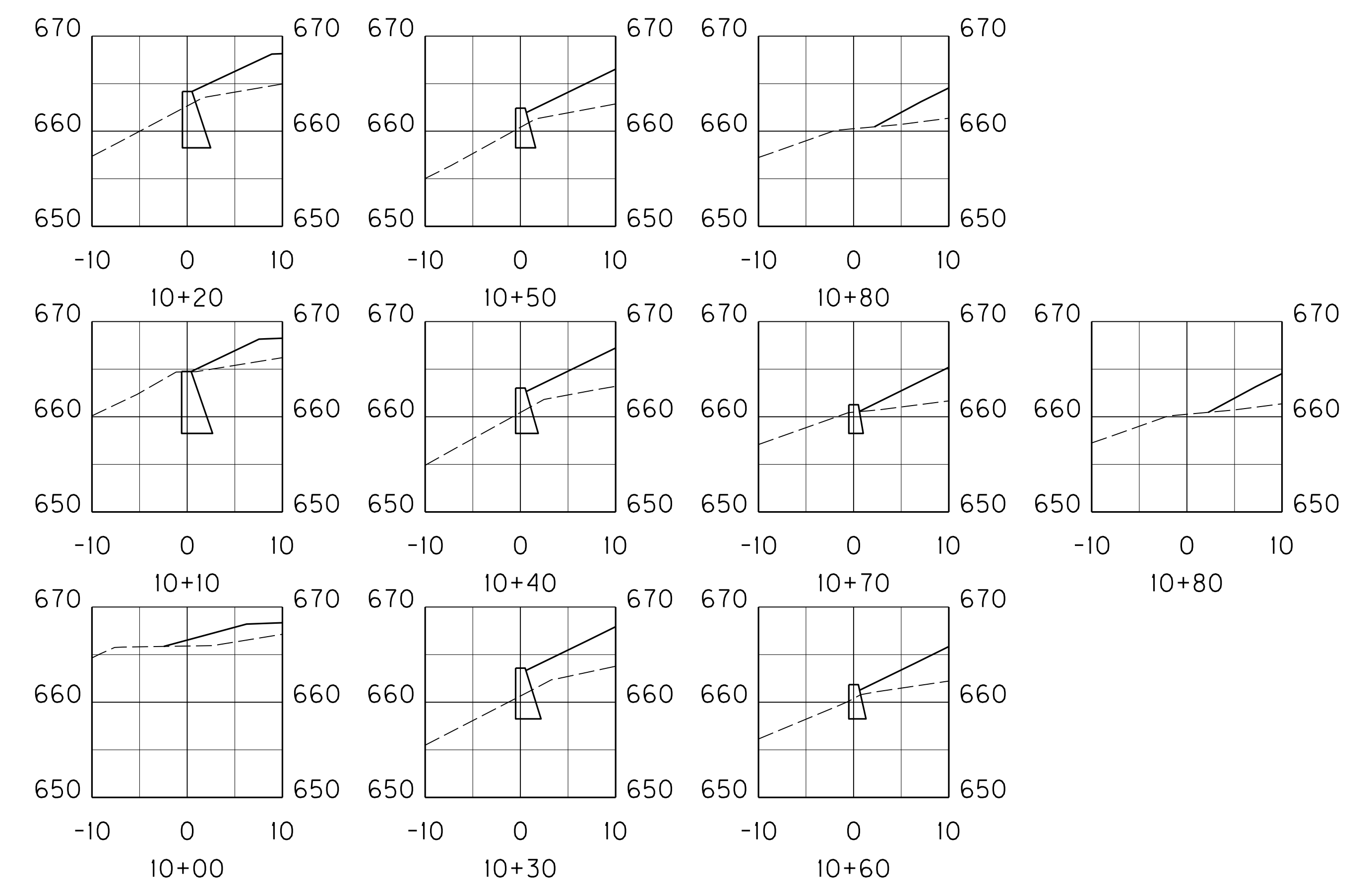
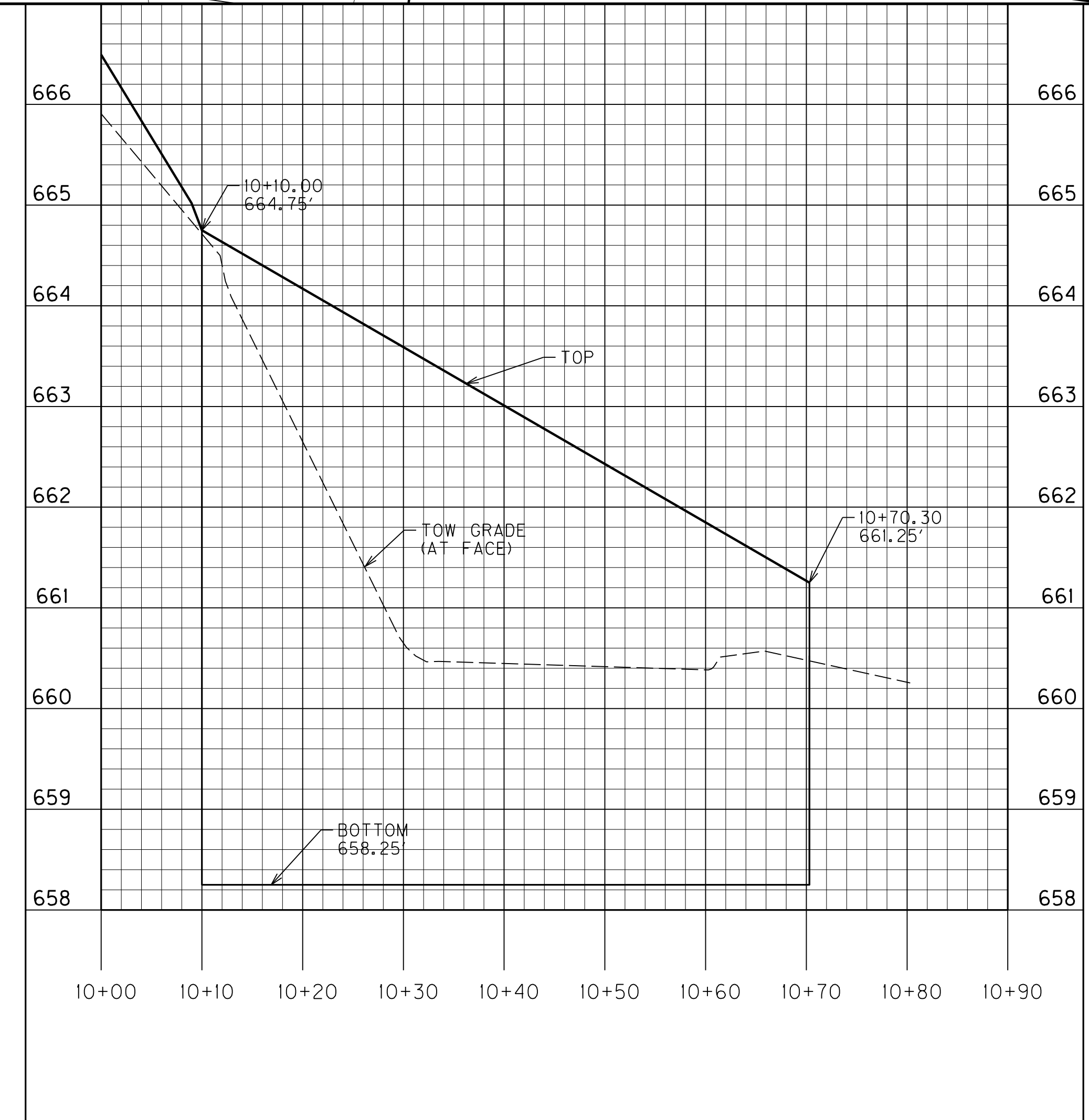


FILE NAME: G:\PWORK\STEWART.LICH\0634316\062005.DGN

USER: stewart.lich  
DATE PLOTTED: April 21, 2016

E-SHEET NAME:

MicroStation v8.11.7.443



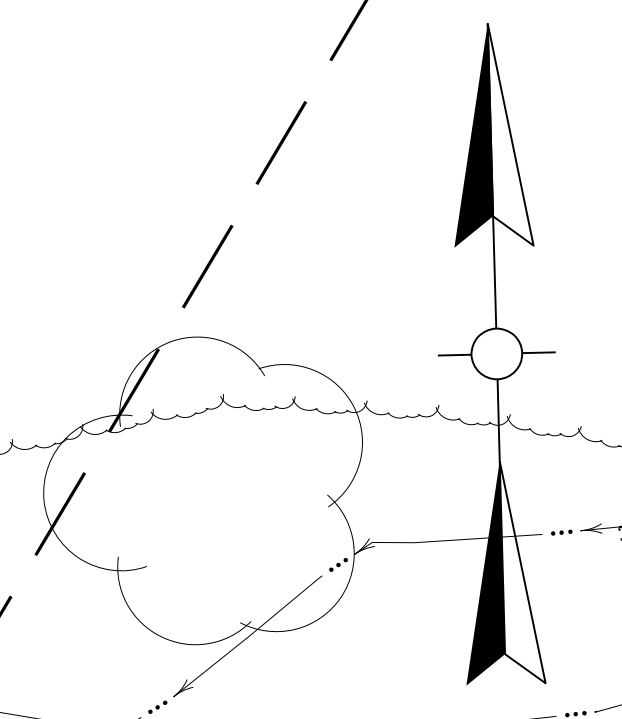
GRAVITY RET. WALL DETAIL  
 STA. 611+90  
 SCALE: 1"=10'



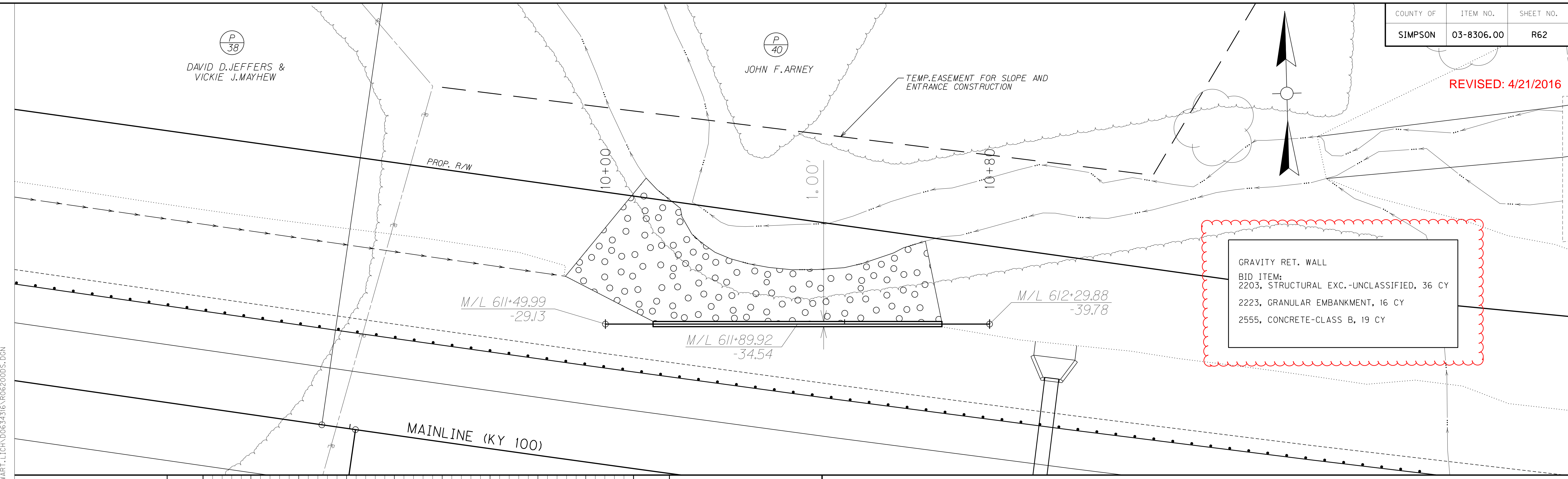
REVISED: 4/21/2016

P  
38  
DAVID D. JEFFERS &  
VICKIE J. MAYHEW

P  
40  
JOHN F. ARNEY



TEMP. EASEMENT FOR SLOPE AND  
ENTRANCE CONSTRUCTION



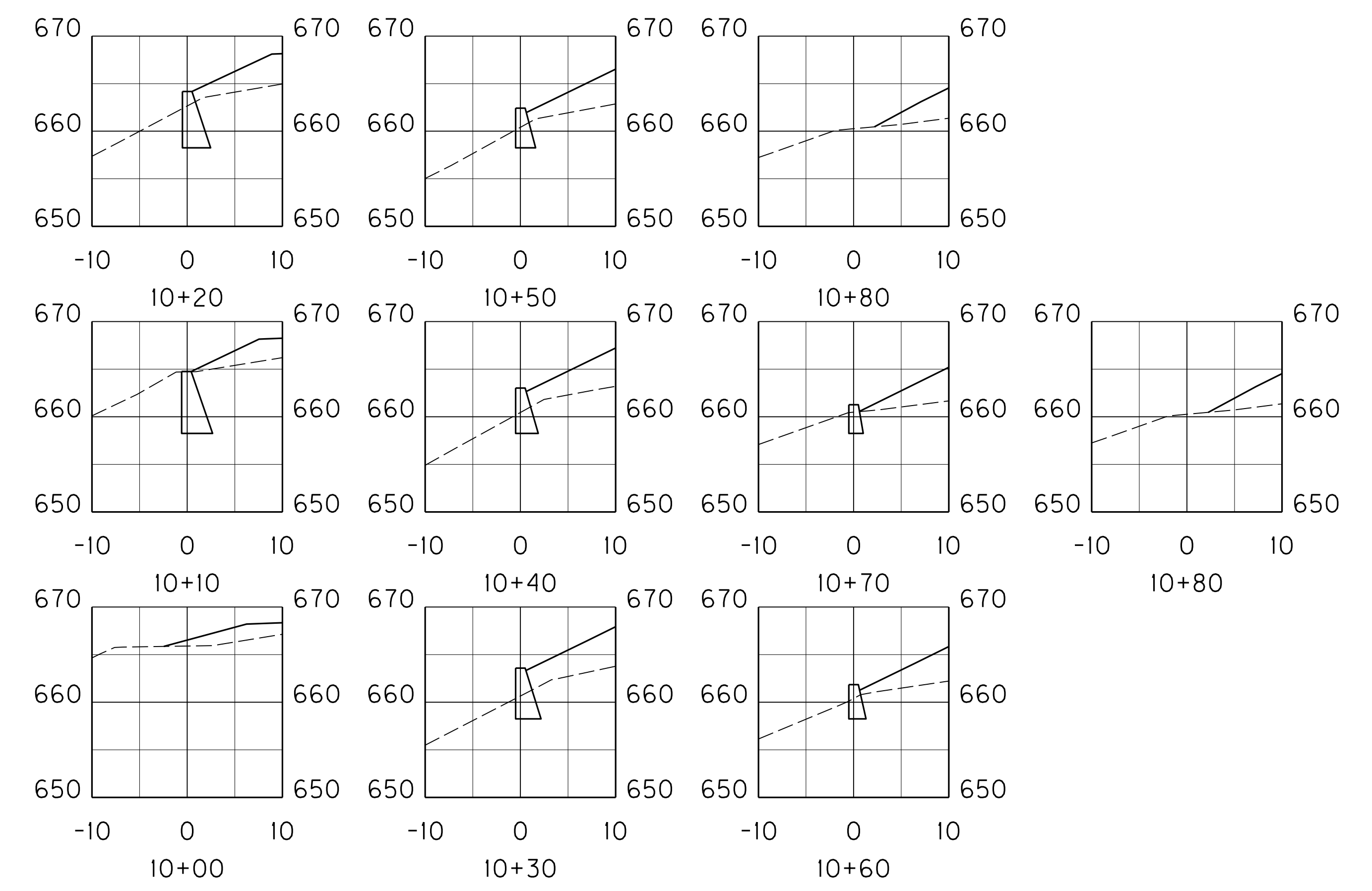
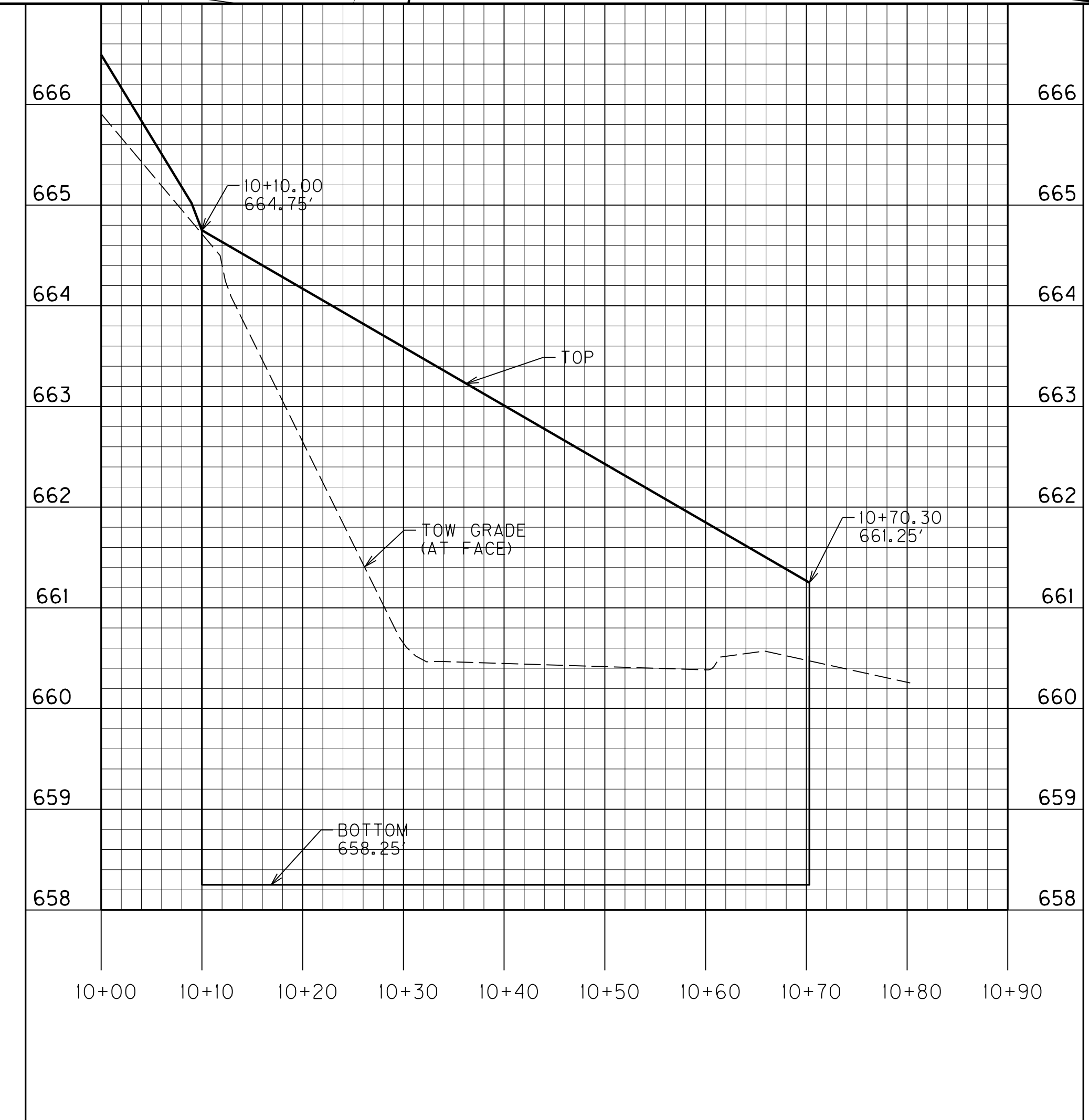
GRAVITY RET. WALL  
 BID ITEM:  
 2203, STRUCTURAL EXC.-UNCLASSIFIED, 36 CY  
 2223, GRANULAR EMBANKMENT, 16 CY  
 2555, CONCRETE-CLASS B, 19 CY

FILE NAME: G:\PWORK\STEWART.LICH\0634316\062005.DGN

USER: stewart.lich  
DATE PLOTTED: April 21, 2016

E-SHEET NAME:

MicroStation v8.11.7.443



GRAVITY RET. WALL DETAIL  
 STA. 611+90  
 SCALE: 1"=10'

**PROPOSAL BID ITEMS**

161213

Page 1 of 4

Report Date 4/22/16

**Section: 0001 - PAVING - ASPHALT ALTERNATE**

LINE	BID CODE	ALT	DESCRIPTION	QUANTITY	UNIT	UNIT PRIC	FP	AMOUNT
0010	00003		CRUSHED STONE BASE	45,743.00	TON		\$	
0020	00013		LIME STABILIZED ROADBED	63,124.00	SQYD		\$	
0030	00014		LIME	1,187.00	TON		\$	
0040	00020		TRAFFIC BOUND BASE	542.00	TON		\$	
0050	00100		ASPHALT SEAL AGGREGATE	421.00	TON		\$	
0060	00103		ASPHALT SEAL COAT	51.00	TON		\$	
0070	00214		CL3 ASPH BASE 1.00D PG64-22	33,923.00	TON		\$	
0080	00324		CL3 ASPH SURF 0.50B PG64-22	6,670.00	TON		\$	
0090	00358		ASPHALT CURING SEAL	64.00	TON		\$	
0100	02084		JPC PAVEMENT-8 IN	206.00	SQYD		\$	
0110	02230		EMBANKMENT IN PLACE	175,026.00	CUYD		\$	
0120	02702		SAND FOR BLOTTER	158.00	TON		\$	
0130	10203ND		PAVEMENT ADJUSTMENT (ASPHALT)	1.00	LS	312,480.00	\$	\$312,480.00

**Section: 0002 - PAVING - CONCRETE ALTERNATE**

LINE	BID CODE	ALT	DESCRIPTION	QUANTITY	UNIT	UNIT PRIC	FP	AMOUNT
0140	00003		CRUSHED STONE BASE	44,300.00	TON		\$	
0150	00013		LIME STABILIZED ROADBED	63,124.00	SQYD		\$	
0160	00014		LIME	1,187.00	TON		\$	
0170	00020		TRAFFIC BOUND BASE	542.00	TON		\$	
0180	00100		ASPHALT SEAL AGGREGATE	421.00	TON		\$	
0190	00103		ASPHALT SEAL COAT	51.00	TON		\$	
0200	00214		CL3 ASPH BASE 1.00D PG64-22	6,258.00	TON		\$	
0210	00324		CL3 ASPH SURF 0.50B PG64-22	2,015.00	TON		\$	
0220	00358		ASPHALT CURING SEAL	64.00	TON		\$	
0230	02073		JPC PAVEMENT-9 IN	41,524.00	SQYD		\$	
0240	02078		JPC PAVEMENT-6 IN SHLD	13,567.00	SQYD		\$	
0250	02084		JPC PAVEMENT-8 IN	206.00	SQYD		\$	
0260	02230		EMBANKMENT IN PLACE	176,741.00	CUYD		\$	
0270	02702		SAND FOR BLOTTER	158.00	TON		\$	
0280	10203ND		PAVEMENT ADJUSTMENT (CONCRETE)	1.00	LS	173,541.00	\$	\$173,541.00

**Section: 0003 - ROADWAY**

LINE	BID CODE	ALT	DESCRIPTION	QUANTITY	UNIT	UNIT PRIC	FP	AMOUNT
0290	00078		CRUSHED AGGREGATE SIZE NO 2	2,544.00	TON		\$	
0300	01825		ISLAND CURB AND GUTTER	200.00	LF		\$	
0310	01982		DELINEATOR FOR GUARDRAIL MONO DIRECTIONAL WHITE	21.00	EACH		\$	
0320	01984		DELINEATOR FOR BARRIER - WHITE	2.00	EACH		\$	
0330	02014		BARRICADE-TYPE III	16.00	EACH		\$	
0335	02203		STRUCTURE EXCAV-UNCLASSIFIED (ADDED: 4-22-16)	36.00	CUYD		\$	

**PROPOSAL BID ITEMS**

161213

Page 2 of 4

Report Date 4/22/16

LINE	BID CODE	ALT	DESCRIPTION	QUANTITY	UNIT	UNIT PRIC	FP	AMOUNT
0340	02223		GRANULAR EMBANKMENT (REVISED: 4-22-16)	116.00	CUYD		\$	
0350	02242		WATER (FOR DUST CONTROL)	100.00	MGAL		\$	
0360	02263		FENCE-WOVEN WIRE TYPE 2	630.00	LF		\$	
0370	02351		GUARDRAIL-STEEL W BEAM-S FACE	1,930.00	LF		\$	
0380	02360		GUARDRAIL TERMINAL SECTION NO 1	5.00	EACH		\$	
0390	02363		GUARDRAIL CONNECTOR TO BRIDGE END TY A	8.00	EACH		\$	
0400	02391		GUARDRAIL END TREATMENT TYPE 4A	1.00	EACH		\$	
0410	02429		RIGHT-OF-WAY MONUMENT TYPE 1	71.00	EACH		\$	
0420	02432		WITNESS POST	36.00	EACH		\$	
0430	02469		CLEAN SINKHOLE	2.00	EACH		\$	
0440	02483		CHANNEL LINING CLASS II	1,529.00	TON		\$	
0450	02545		CLEARING AND GRUBBING (APPROXIMATELY 53.12 ACRES)	1.00	LS		\$	
0455	02555		CONCRETE-CLASS B (ADDED: 4-22-16)	19.00	CUYD		\$	
0460	02562		TEMPORARY SIGNS	280.00	SQFT		\$	
0470	02585		EDGE KEY	390.00	LF		\$	
0480	02599		FABRIC-GEOTEXTILE TYPE IV	5,652.00	SQYD		\$	
0490	02600		FABRIC GEOTEXTILE TY IV FOR PIPE	2,800.00	SQYD	\$2.00	\$	\$5,600.00
0500	02650		MAINTAIN & CONTROL TRAFFIC	1.00	LS		\$	
0510	02651		DIVERSIONS (BY-PASS DETOURS)	1.00	LS		\$	
0520	02671		PORTABLE CHANGEABLE MESSAGE SIGN	2.00	EACH		\$	
0530	02701		TEMP SILT FENCE	10,597.00	LF		\$	
0540	02704		SILT TRAP TYPE B	174.00	EACH		\$	
0550	02707		CLEAN SILT TRAP TYPE B	174.00	EACH		\$	
0560	02726		STAKING	1.00	LS		\$	
0570	05950		EROSION CONTROL BLANKET	45,848.00	SQYD		\$	
0571	05952		TEMP MULCH (ADDED: 4-20-16)	100,880.00	SQYD		\$	
0572	05953		TEMP SEEDING AND PROTECTION (ADDED: 4-20-16)	136,527.00	SQYD		\$	
0580	05963		INITIAL FERTILIZER	5.00	TON		\$	
0590	05964		20-10-10 FERTILIZER	8.00	TON		\$	
0600	05985		SEEDING AND PROTECTION	150,565.00	SQYD		\$	
0610	05990		SODDING	21,600.00	SQYD		\$	
0620	05992		AGRICULTURAL LIMESTONE	94.00	TON		\$	
0630	06406		SBM ALUM SHEET SIGNS .080 IN	376.00	SQFT		\$	
0640	06410		STEEL POST TYPE 1	648.00	LF		\$	
0650	06510		PAVE STRIPING-TEMP PAINT-4 IN	48,196.00	LF		\$	
0660	06514		PAVE STRIPING-PERM PAINT-4 IN	61,914.00	LF		\$	
0670	06568		PAVE MARKING-THERMO STOP BAR-24IN	62.00	LF		\$	
0680	20000ES724		TREE	11.00	EACH		\$	
0690	20315ED		CLAY SOIL CAP	15.00	CUYD		\$	
0700	20362ES403		SHOULDER RUMBLE STRIPS-SAWED	30,333.00	LF		\$	
0710	20458ES403		CENTERLINE RUMBLE STRIPS	15,008.00	LF		\$	
0720	23274EN11F		TURF REINFORCEMENT MAT 1	23,372.00	SQYD		\$	
0730	24631EC		BARCODE SIGN INVENTORY	89.00	EACH		\$	
0740	24779EC		INTELLIGENT COMPACTION FOR SOIL	174,579.00	CUYD		\$	

**PROPOSAL BID ITEMS**

161213

Page 3 of 4

Report Date 4/22/16

LINE	BID CODE	ALT	DESCRIPTION	QUANTITY	UNIT	UNIT PRIC	FP	AMOUNT
0750	24780EC		INTELLIGENT COMPACTION FOR AGGREGATE	45,213.00	TON		\$	
0760	24781EC		INTELLIGENT COMPACTION FOR ASPHALT	40,560.00	TON		\$	

**Section: 0004 - DRAINAGE**

LINE	BID CODE	ALT	DESCRIPTION	QUANTITY	UNIT	UNIT PRIC	FP	AMOUNT
0770	00440		ENTRANCE PIPE-15 IN	883.00	LF		\$	
0780	00441		ENTRANCE PIPE-18 IN	348.00	LF		\$	
0790	00443		ENTRANCE PIPE-24 IN	277.00	LF		\$	
0800	00452		ENTRANCE PIPE-24 IN EQUIV	242.00	LF		\$	
0810	00454		ENTRANCE PIPE-30 IN EQUIV	442.00	LF		\$	
0820	00462		CULVERT PIPE-18 IN	109.00	LF		\$	
0830	00464		CULVERT PIPE-24 IN	96.00	LF		\$	
0840	00466		CULVERT PIPE-30 IN	194.00	LF		\$	
0850	00468		CULVERT PIPE-36 IN	60.00	LF		\$	
0860	00492		CULVERT PIPE-24 IN EQUIV	239.00	LF		\$	
0870	00494		CULVERT PIPE-30 IN EQUIV	104.00	LF		\$	
0880	01000		PERFORATED PIPE-4 IN	486.00	LF		\$	
0890	01010		NON-PERFORATED PIPE-4 IN	629.00	LF		\$	
0900	01028		PERF PIPE HEADWALL TY 3-4 IN	8.00	EACH		\$	
0910	01208		PIPE CULVERT HEADWALL-24 IN	2.00	EACH		\$	
0920	01210		PIPE CULVERT HEADWALL-30 IN	2.00	EACH		\$	
0930	01212		PIPE CULVERT HEADWALL-36 IN	1.00	EACH		\$	
0940	01452		S & F BOX INLET-OUTLET-30 IN	2.00	EACH		\$	
0950	01453		S & F BOX INLET-OUTLET-36 IN	1.00	EACH		\$	
0960	01670		SPRING BOX INLET TYPE B	1.00	EACH		\$	
0970	08100		CONCRETE-CLASS A	69.60	CUYD		\$	
0980	22581EN		ENTRANCE PIPE-36 IN	206.00	LF		\$	
0990	23049ES701		CULVERT PIPE-21 IN EQUIV	256.00	LF		\$	
1000	24814EC		PIPELINE INSPECTION	671.00	LF		\$	

**Section: 0005 - BRIDGE - 6 X 4 CULVERT - DWG. 27312 - STA. 562+11.35**

LINE	BID CODE	ALT	DESCRIPTION	QUANTITY	UNIT	UNIT PRIC	FP	AMOUNT
1010	08003		FOUNDATION PREPARATION	1.00	LS		\$	
1020	08100		CONCRETE-CLASS A	86.10	CUYD		\$	
1030	08150		STEEL REINFORCEMENT	7,248.00	LB		\$	

**Section: 0006 - BRIDGE - 16 X 6 CULVERT - DWG. 27394 - STA. 596+01.36**

LINE	BID CODE	ALT	DESCRIPTION	QUANTITY	UNIT	UNIT PRIC	FP	AMOUNT
1040	08002		STRUCTURE EXCAV-SOLID ROCK	209.00	CUYD		\$	
1050	08003		FOUNDATION PREPARATION	1.00	LS		\$	
1060	08100		CONCRETE-CLASS A	229.40	CUYD		\$	
1070	08150		STEEL REINFORCEMENT	28,112.00	LB		\$	



**PROPOSAL BID ITEMS**

161213

Page 4 of 4

Report Date 4/22/16

**Section: 0007 - BRIDGE - LICK CREEK - DWG. 27395 - STA. 10+84.75**

LINE	BID CODE	ALT	DESCRIPTION	QUANTITY	UNIT	UNIT PRIC	FP	AMOUNT
1080	02998		MASONRY COATING	202.00	SQYD		\$	
1090	03299		ARMORED EDGE FOR CONCRETE	24.00	LF		\$	
1100	08001		STRUCTURE EXCAVATION-COMMON	311.00	CUYD		\$	
1110	08002		STRUCTURE EXCAV-SOLID ROCK	57.00	CUYD		\$	
1120	08100		CONCRETE-CLASS A	143.20	CUYD		\$	
1130	08104		CONCRETE-CLASS AA	29.70	CUYD		\$	
1140	08150		STEEL REINFORCEMENT	14,649.00	LB		\$	
1150	08151		STEEL REINFORCEMENT-EPOXY COATED	8,287.00	LB		\$	
1160	21532ED		RAIL SYSTEM TYPE III	68.00	LF		\$	

**Section: 0008 - BRIDGE - LICK CREEK - DWG. 27396 - STA. 619+05.67**

LINE	BID CODE	ALT	DESCRIPTION	QUANTITY	UNIT	UNIT PRIC	FP	AMOUNT
1170	02231		STRUCTURE GRANULAR BACKFILL	498.00	CUYD		\$	
1180	02998		MASONRY COATING	581.00	SQYD		\$	
1190	03299		ARMORED EDGE FOR CONCRETE	86.60	LF		\$	
1200	08001		STRUCTURE EXCAVATION-COMMON	1,777.00	CUYD		\$	
1210	08019		CYCLOPEAN STONE RIP RAP	624.00	TON		\$	
1220	08033		TEST PILES	34.00	LF		\$	
1230	08039		PRE-DRILLING FOR PILES	180.00	LF		\$	
1240	08046		PILES-STEEL HP12X53	224.00	LF		\$	
1250	08100		CONCRETE-CLASS A	109.00	CUYD		\$	
1260	08104		CONCRETE-CLASS AA	198.50	CUYD		\$	
1270	08151		STEEL REINFORCEMENT-EPOXY COATED	49,716.00	LB		\$	
1280	08634		PRECAST PC I BEAM TYPE 4	557.50	LF		\$	
1290	21532ED		RAIL SYSTEM TYPE III	226.40	LF		\$	
1300	23813EC		DECK DRAIN	6.00	EACH		\$	

**Section: 0009 - DEMOBILIZATION &/OR MOBILIZATION**

LINE	BID CODE	ALT	DESCRIPTION	QUANTITY	UNIT	UNIT PRIC	FP	AMOUNT
1310	02568		MOBILIZATION	1.00	LS		\$	
1320	02569		DEMOBILIZATION	1.00	LS		\$	